

ABOUT US

Community Housing was formed in 2000 through a stock transfer from Wyre Forest Council. We are a social business and one of Worcestershire's largest Registered Providers of social housing. We provide and manage six thousand properties mainly in the Wyre Forest area and our office local office are in Kidderminster.

We are proud of what we have achieved for the people and communities we support over the past 20 years. Over the coming years we want to become a more significant social housebuilder in Worcestershire, focused on helping people to thrive and to live independently, knowing that they have a secure home that they can afford with a landlord who cares about them.

Values

Values show us what's important, how we should behave and inspire us to be the best we can be. They support our vision and guide the way we make decisions and operate as a business. In late 2021, we asked customers and employees to tell us what they thought the values of Community Housing should be.

They told us that it was very simple – **RESPECT**.

Respect in the way that we communicate, deliver services, involve and consider customers and ourselves.



Our Values

RESPONSIBLE – We do what we say we will do and honour our commitment to colleagues and customers.

EQUALITY – We see the person first and make sure our behaviour is always appropriate and courteous.

SUPPORT – We value the support we receive from our managers and colleagues to achieve wellness and balance so we can be at our best when we deliver services to customers.

PASSION – We believe in the work that we do and the difference we can make, no matter what stage we have been involved.

EXPERTISE – We bring our skills and experience to our work and know that they will be valued as much as we value those demonstrated by colleagues.

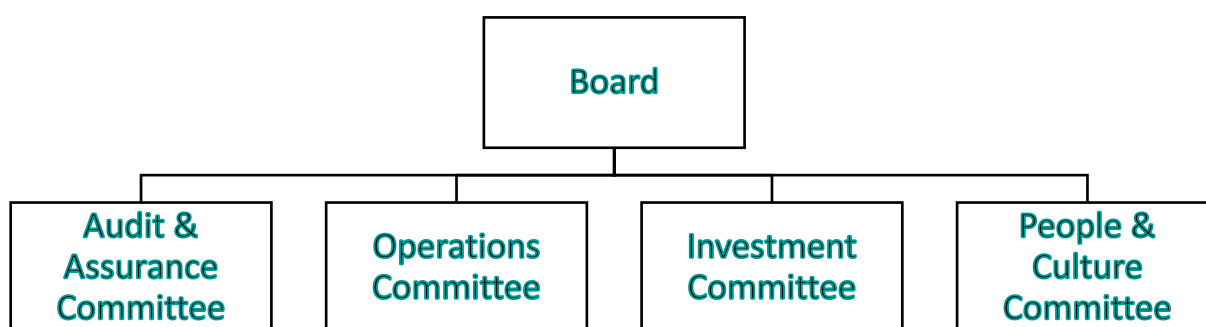
COMMUNICATE – We are thoughtful in the way we communicate to customers and colleagues, and we make sure that we respond promptly, even though we may not have the answer straight away.

TOGETHER – We value being part of the Community Housing Team and we work better together to achieve the right outcomes for our customers and colleagues.

Our Purpose

“To provide affordable, quality homes and deliver great services in safe communities”.

Our Governance Structure



We have received a rating of G1 for Governance which is defined as “meeting the governance requirements” and V2 for Viability which confirms that we are compliant with viability requirements. It also means that we have the financial capacity to deal with a reasonable range of adverse scenarios, but we need to manage material risks to ensure continued compliance. For further information about Community Housing please visit our website [HERE](#)